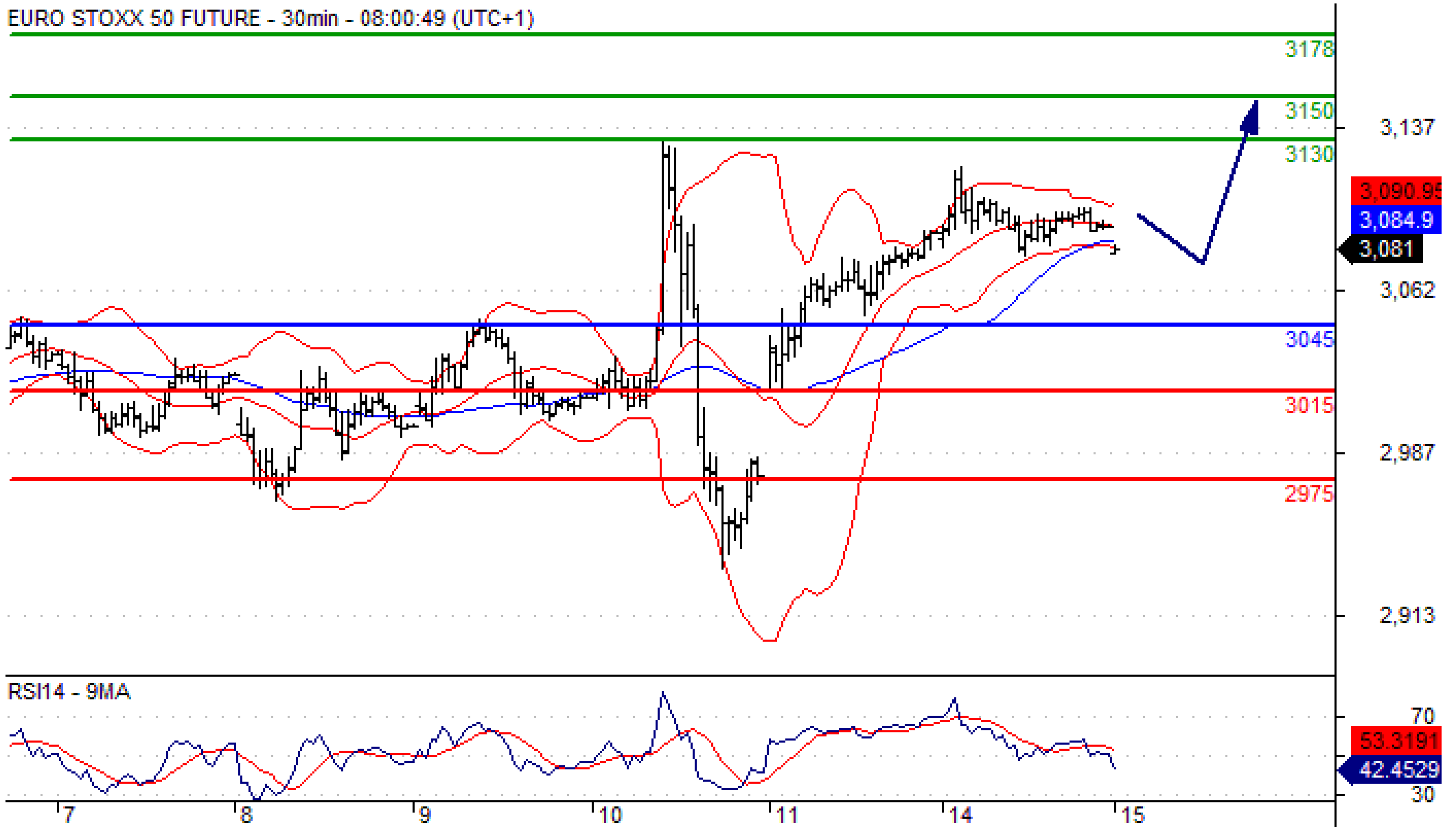


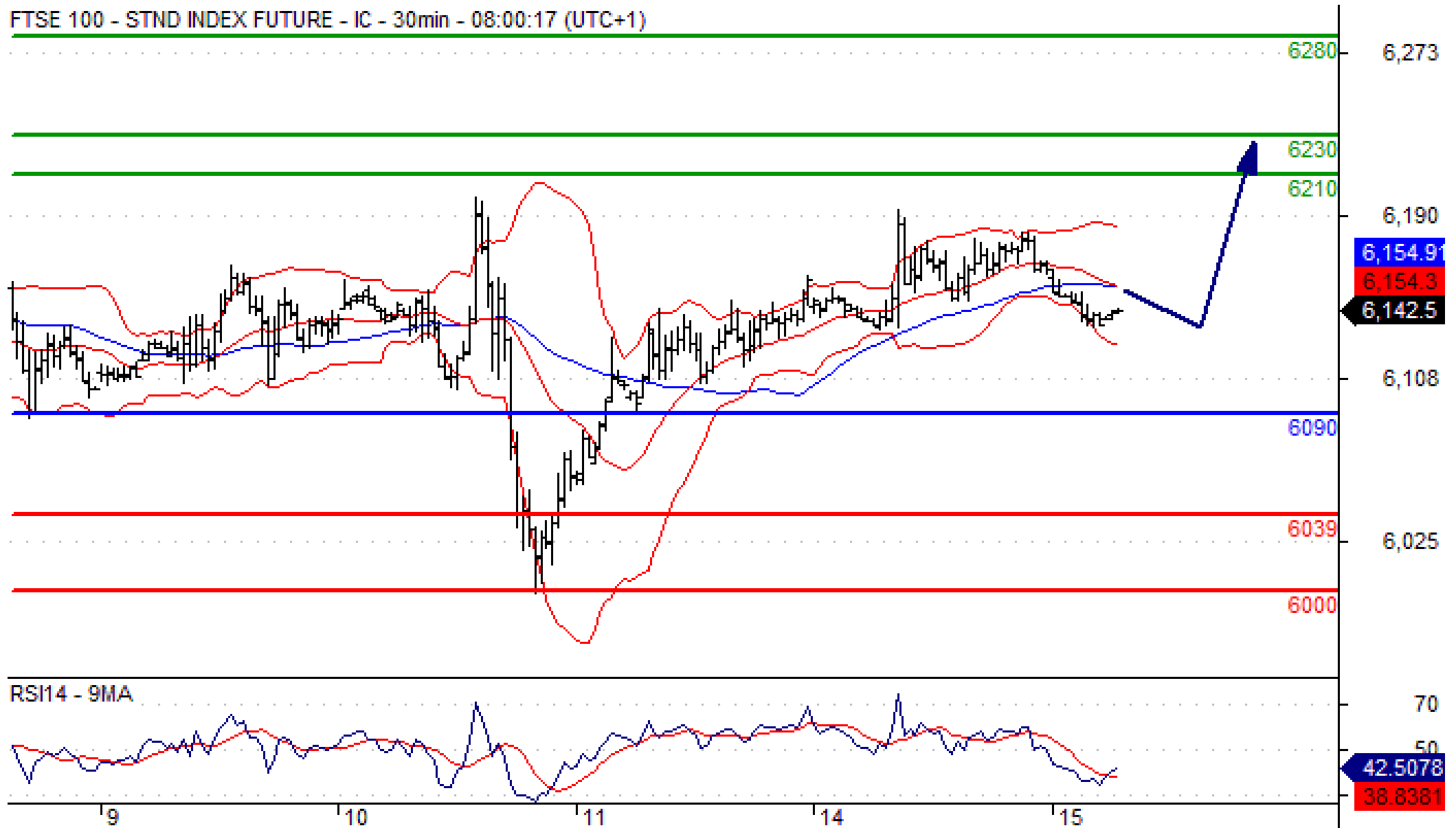
EUROPEAN MORNING COMMENT - EURO STOXX 50 FUTURE INTRADAY 30MIN

EURO STOXX 50 FUTURE - 30min - 08:00:49 (UTC+1)



EUROPEAN MORNING COMMENT - FTSE 100 FUTURE INTRADAY 30MIN

FTSE 100 - STND INDEX FUTURE - IC - 30min - 08:00:17 (UTC+1)



Market Monitor (Up to 3-months) - 'STOXX Europe 600 sectors' vs 'STOXX 600 index (Neutral)'

The aim of this Sectors Matrix is to give an overview in terms of tactical sector allocation from a purely technical point of view. For taking 'long positions' you would like to look into segments that combine at least one Positive and at least one Neutral rating (Absolute / Relative basis - dark green/green background). For taking 'short positions' you would like to see at least one negative rating and at least one Neutral rating (Absolute / Relative basis - red/orange background). Other segments would be avoided (grey background). Additional information : The up arrow (↑) means that the sector is upgraded (WoW). The down arrow (↓) means that the sector is downgraded (WoW).

3/14/2016	Negative Absolute Basis	Neutral Absolute Basis	Positive Absolute Basis
Positive Relative Basis vs STOXX 600 Index		BASIC RESOURCES CONSTRUCTION & MATERIALS INDUSTRIAL GOODS & SERVICES OIL & GAS PERSONAL & HOUSEHOLD GOODS	
Neutral Relative Basis vs STOXX 600 Index		AUTOMOBILES & PARTS BANKS (↑) CHEMICALS (↑) FINANCIAL SERVICES FOOD & BEVERAGE (↓) INSURANCE (↑) MEDIA RETAIL TECHNOLOGY REAL ESTATE	
Negative Relative Basis vs STOXX 600 Index	TELECOMMUNICATIONS UTILITIES	HEALTH CARE TRAVEL & LEISURE (↓)	



MARKETS NEVER SLEEP

Disclaimer TRADING CENTRAL[®]

The information contained in this publication is not intended as an offer or solicitation for the purchase or sale of any financial instrument. Any opinion offered herein reflects TRADING Central current judgment and may change without notice. Users acknowledge and agree to the fact that, by its very nature, any investment in shares, stock options and similar and assimilated products is characterised by a certain degree of uncertainty and that, consequently, any investment of this nature involves risks for which the user is solely responsible and liable.

Services in the U.S. are offered through TRADING Central Americas, Inc.

TRADING Central is not registered in France as an Investment Services Provider but complies with the following rules and directives, including:

- General Regulation Handbook of the AMF, Book III, Title III, Chapter VII «Investment Analysts Not Associated with an Investment Services Provider»
- EU Commission Directive 2006/73 dated 10 August 2006, Articles 24 and 25
- EU Commission Directive 2004/39 dated 21 April 2004
- EU Commission Directive 2003/125 dated 22 December 2003